

Check
www.baileyslashsite.com
for closures and program updates!

DOs

Max length = 6 feet

Max diameter = 8 inches

DON'Ts

NO stumps, roots, lumber

NO tires, dirt, household trash

NO metals, weeds, grasses

NO bags of pine cones,
pine needles, or bark

NO contractor loads

SPONSORS

Coalition for the Upper South Platte

Park County



The Coalition for the Upper South Platte seeks to protect the water quality and ecological health of the Upper South Platte Watershed through the cooperative efforts of watershed stakeholders with emphasis placed on community values and economic sustainability.

Volunteer Program: To ensure success and sustainability of this important program, CUSP needs volunteer assistance at the slash collection site.

Please consider making a tax-deductible donation to help continue this important program.

FOR MORE INFORMATION

719-748-0033

CUSP@uppersouthplatte.org

www.baileyslashsite.com

cusp.ws

BAILEY SLASH SITE



CLEAN SLASH ACCEPTED

Bailey, Park County, Colorado

WEEKENDS ONLY

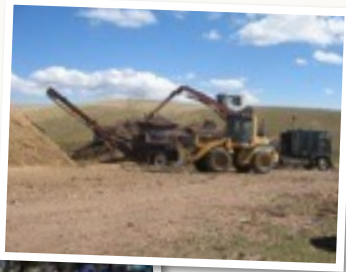
August 5th thru November 6th 2016

Friday, Saturday & Sunday 9-3

**Special closings:
September 4th**

SAFE FORESTS — SAFE COMMUNITIES

Not only does defensible space surrounding your home protect your own property, when created with your neighbors, defensible space helps protect your community, your forests and your watershed.



Bring your slash from thinning to the Slash Collection Site

Protect your community!

Location: *From Conifer go south on Hwy 285, take CR 72 exit, cross under Hwy to site on left across parking lot.
From Bailey go north on 285 to top of Crow Hill, take CR 72 exit, turn left to site on right.*

Fee: *Park County Residents: \$15.00 per load of slash (a load is considered equivalent to a pickup bed full)
All Others: \$20.00 per load*

Mulch: *Free when available (load yourself)*



BEFORE Fuels Reduction

Homeowners can take a number of steps to protect their property and help alleviate the spread of wildland fires. Preventative measures include clearing excess fuel, creating defensible space around their homes and using FireWise practices. Due to Colorado's arid climate and fire-dependent forests, many homeowners and landowners may be particularly vulnerable to wildfires. It is important to keep this threat in mind when buying or building a

AFTER Fuels Reduction

home. Fire is unpredictable. If there are weaknesses in your home's fire protection scheme, fire can gain the upper hand because of some overlooked or seemingly inconsequential factor. By creating a wildfire defensible zone, homes are less vulnerable from this naturally occurring phenomenon and the chance of spreading wildfires is greatly reduced*.

* Source: <http://csfs.colostate.edu/pages/wf-protection.html>