

**Check**  
[www.divideslashsite.com](http://www.divideslashsite.com)  
**for closures and program updates!**

**DOs**

Max length = 6 feet

Max diameter = 8 inches

**DON'Ts**

NO stumps, roots, lumber

NO ties, dirt, household trash

NO metals, weeds, grasses

NO bags of pine cones &

needles

**SPONSORS**

Coalition for the Upper South Platte

Teller County



*The Coalition for the Upper South Platte* seeks to protect the water quality and ecological health of the Upper South Platte Watershed, through the cooperative efforts of watershed stakeholders, with emphasis placed on community values and economic sustainability.

**Volunteer Program:** To ensure success and sustainability of this important program, CUSP needs volunteer assistance at the slash collection site.

**Please consider making a tax deductible donation to help continue this important program.**

FOR MORE INFORMATION

719-748-0033

[CUSP@uppersouthplatte.org](mailto:CUSP@uppersouthplatte.org)

[www.divideslashsite.com](http://www.divideslashsite.com)

[cusp.ws](http://cusp.ws)

# DIVIDE SLASH SITE



**- CLEAN SLASH ACCEPTED-**

*Divide, Teller County, Colorado*

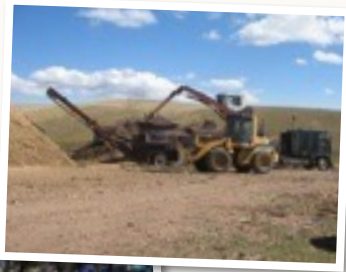
**WEEKENDS ONLY**

**May 6th thru November 6th 2016  
Friday, Saturday & Sunday 9-3**

**Special closings:  
May 29th, July 3rd & September 4th**

## SAFE FORESTS — SAFE COMMUNITIES

Not only does defensible space surrounding your home protect your own property, when created with your neighbors, defensible space helps protect your community, your forests and your watershed.



### **Bring your slash from thinning to the Slash Collection Site**

### **Protect your community!**

**Location:** *Just east of the intersection of Hwys 24 & 67 in Divide, take Hybrook Rd South. The site is on the left past the Post Office.*

**Fee:** *\$10.00 per load of slash (a load is considered equivalent to a pickup bed full)*

**Mulch:** *Free when available (load yourself)*



Homeowners can take a number of steps to protect their property and help alleviate the spread of wildland fires. Preventative measures include clearing excess fuel, creating defensible space around their homes and using FireWise practices. Due to Colorado's arid climate and fire-dependent forests, many homeowners and landowners may be particularly vulnerable to wildfires. It is important to keep this threat in mind when buying or building a

home. Fire is unpredictable. If there are weaknesses in your home's fire protection scheme, fire can gain the upper hand because of some overlooked or seemingly inconsequential factor. By creating a wildfire defensible zone, homes are less vulnerable from this naturally occurring phenomenon and the chance of spreading wildfires is greatly reduced\*.

\* Source: <http://csfs.colostate.edu/pages/wf-protection.html>